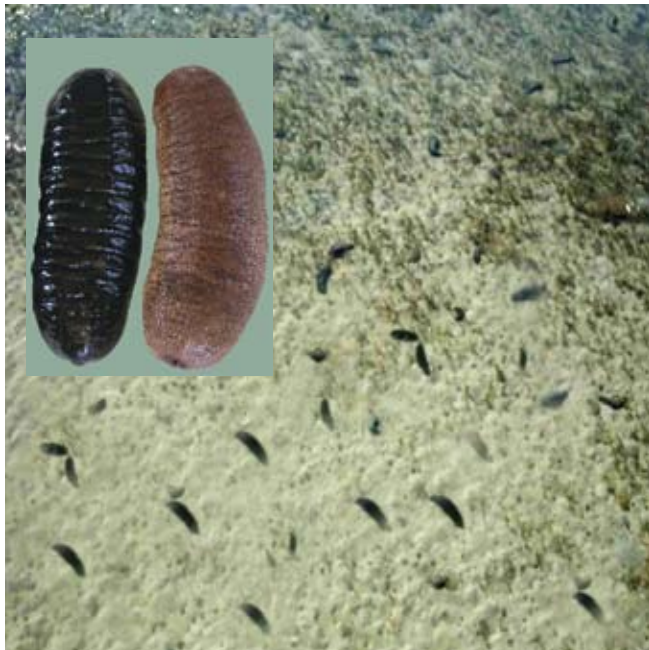


Tropical Sea Cucumber Culture

Expanding, Eco-Friendly Industry Supplies Asian Markets



After about six months, sea cucumbers – *Holothuria scabra*, left, and *H. lessoni* – are grown out in the sea or ponds for eventual sale in Asian markets or restaurants.

Dr. Beni Giraspy

Sea Cucumber Consultancy
15 Milo Street
Hervey Bay 4655
Queensland, Australia.
beni@seacucumberconsultancy.com.au

Dr. Grisilda Ivy Walsalam
Sea Cucumber Consultancy

Summary:

Advances in the culture of sea cucumbers are countering the overexploitation of wild populations. Protocols for intensive hatchery production are well established, and juvenile production efficiency has improved. After hatchery and nursery phases, juvenile sea cucumbers are moved to protected bays or ponds for 12 to 15 months of growout. The industry is expected to boom in the next few years with final growout in abandoned shrimp ponds or shallow lagoons.

Overexploitation is affecting wild populations of sea cucumbers worldwide. The demand for the “beche de mer” (processed dry product) is significantly increasing in Asia, promoting wild captures and making natural stocks more vulnerable to overfishing. Properly designed aquaculture and restocking programs are needed to meet the increasing demand and restore

depleted fisheries to sustainable levels.

Over the past two decades, significant advances have been made in the culture of sea cucumbers, especially with the temperate species. Tropical sea cucumber species with excellent biological and market characteristics for commercial aquaculture have received much attention in recent years.

Since species like *Holothuria scabra* and *H. lessoni* have high potential as a lucrative export product for Asian markets, hatchery production and farming of these species presents an attractive aquaculture opportunity. These two species are popular in Asian cuisine and also used in Chinese traditional food and medicine.

Production Technology

Research and development activities led by the Sea Cucumber Consultancy in a few countries during the last 15 years have led to tremendous progress in the areas of broodstock collection and management, induced spawning, larviculture, juvenile rearing, nutrition and the development of sustainable growout technology for hatchery-produced sea cucumber juveniles.

Since the successful hatchery production of sea cucumber juveniles by the authors’ team in Maldives during 2000, the protocols for sophisticated intensive hatchery production have been well established, and juvenile production efficiency has improved. Australia’s first sea cucumber hatchery, Bluefin Sea Cucumber Hatchery in Queensland, now produces millions of sea cucumber juveniles.

The authors are also undertaking projects in various Asian and Middle Eastern countries for the development of new sea cucumber hatcheries. The expanding industry is expected to boom in the next few years, when the new hatcheries begin producing millions of additional sea cucumber juveniles for growout in abandoned shrimp ponds.

Hatcheries

Commercial hatcheries for tropical sea cucumbers typically consist of broodstock-conditioning and management systems, and a mass culture unit for live feed (microalgae). Production involves larval rearing in the hatchery, juvenile rearing in the nursery and growout in ponds or shallow lagoons. The hatchery facilities usually include a water treatment system with a heating and chilling facility, aeration and feed distribution systems. The seawater supply systems incorporate inflow and outflow pipes, pumps and fine filtration.

Sea cucumber broodstock collected from the sea are induced to spawn in the hatchery, where the larvae are then cultured. The eggs hatch into Auricularia larvae within 48 hours after fertilization and start feeding on microalgae. The larvae then develop through the non-feeding Doliolaria stage before reaching the Pentacula stage. In 13 to 15 days, Pentacula animals are induced to settle in plates and are grown into juveniles. Early juveniles are maintained in the hatchery for one month and then for two months in the nursery.

Once the juveniles reach 3 to 5 cm, they are moved to pre-growout facilities in the sea or ponds for three months. They are then moved to pond or lagoon bottoms for further growth, or for



Juveniles spend about two months in the nursery phase.

sea ranching to rebuild depleted natural stocks.

The authors have developed two commercial sea cucumber hatcheries and are currently involved in the development of four more with state-of-the-art technology.

Perspectives

The commercial hatchery production of sea cucumbers and associated growout in abandoned shrimp ponds or sea-based marine farms for seaweed, mussels and finfish are economically attractive and environmentally friendly. They would also ensure a product supply to meet both the Asian markets and an emerging local market of Asian restaurants in other countries.